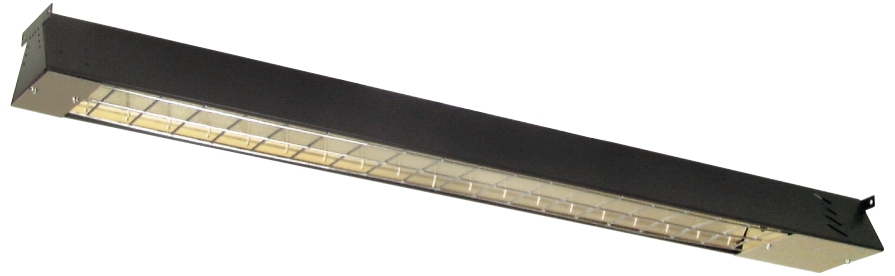


JRK SERIES SINGLE ELEMENT INFRARED HEATER



IDEAL SPACES

- Car Washes
- Parking Garages
- Showrooms
- Work Stations
- Loading Docks
- Aircraft Hangers
- Warehouses

ENCLOSURE TYPE

- Statuary Bronze

ELEMENT TYPE

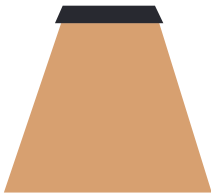
- Quartz

DIMENSIONS

- 3-3/8"H x 5-1/2"W x 46" or 57"

REFLECTIVE ANGLE

- 60° Symetrical



- Ideal for supplemental and spot heating
- Heavy-duty gold anodized reflector has one of the highest levels for radiating heat energy
- Optional JWG wire guard provides a protective safety screen preventing objects contacting hot element
- Horizontal ceiling mount with supplied chains or to wall using the optional FRPWMB wall mounting bracket
- High quality finish and steel internal sheet metal parts give excellent service under most operating conditions, including coastal salt air and most industrial atmospheres**
- Soft, efficient comfort: heat people and objects not the air for optimal energy efficiency
- Energy savings: provides a low cost energy efficient alternative to propane/gas heat
- Uniform, localized heating: provides instant, fully directional space heating
- Clean, safe comfort: no moving air/parts, no dust, no combustion, no fumes
- IPX5-rated; contemporary all-weather design
- Low maintenance with no moving parts or filters, minimal servicing needed



JRK SERIES SINGLE ELEMENT INFRARED HEATER

MODELS & SPECIFICATIONS

CATALOG NO.	UPC	VOLTS	WATTS	REFLECTIVE ANGLE	HEIGHT (IN.)	WIDTH (IN.)	LENGTH (IN.)	SHIP WT. (LBS)
JRK41512	6 85360 08295 0	120	1500	60 Sym	3.375	5.5	46	9
JRK42020	6 85360 08296 7	208	2000	60 Sym	3.375	5.5	46	9
JRK42024	6 85360 08297 4	240	2000	60 Sym	3.375	5.5	46	9
JRK42027	6 85360 08298 1	277	2000	60 Sym	3.375	5.5	46	9
JRK42034	6 85360 08299 8	347	2000	60 Sym	3.375	5.5	46	9
JRK42048	6 85360 08301 8	480	2000	60 Sym	3.375	5.5	46	9
JRK42060	6 85360 08302 5	600	2000	60 Sym	3.375	5.5	46	9
JRK53020	6 85360 08303 2	208	3000	60 Sym	3.375	5.5	57	11
JRK53024	6 85360 08304 9	240	3000	60 Sym	3.375	5.5	57	11
JRK53027	6 85360 08305 6	277	3000	60 Sym	3.375	5.5	57	11
JRK53034	6 85360 08306 3	347	3000	60 Sym	3.375	5.5	57	11
JRK53048	6 85360 08308 7	480	3000	60 Sym	3.375	5.5	57	11
JRK53060	6 85360 08309 4	600	3000	60 Sym	3.375	5.5	57	11

NOTE: *Quartz Lamp: used indoors and outdoors for snow melting and spot heating. **Finish not intended for direct salt spray exposure in marine applications or highly corrosive greenhouse, swimming pool, chemical storage or industrial atmospheres. Maintain at least 5 ft. in radiant path, between bottom of heater and combustible material. Pigtail element leads for a more positive connection in high-traffic areas where physical abuse.

ACCESSORIES

CATALOG NO.	UPC	DESCRIPTION	COMPATIBLE WITH	CARTONS	SHIP WT. (LBS)
JWG46	6 85360 13837 4	Wire Guard	HRK4	1	1
JWG57	6 85360 13838 1	Wire Guard	HRK5	1	1.5

