

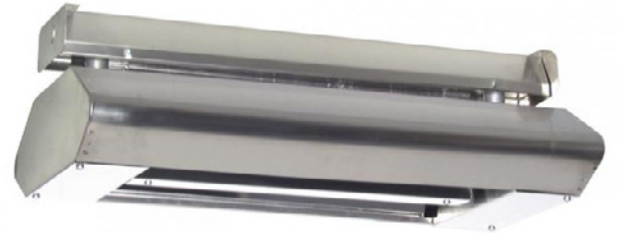
# FRP/FRS SERIES

## Commercial/Industrial Infrared Heater

# RADIANT HEATERS



Product shown installed with optional trim kit. Enclosure Box not included.



### Technical Specifications:

**Element Types:** Metal Sheath, Quartz Tube, Quartz Lamp

**Reflection Angles:** 30° Sym., 60° Sym., 60° Asym., 90° Sym.

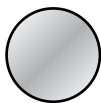
**Mounting Types:** Wall, Ceiling, & Recessed

### Ideal Spaces:

Parking Garages  
Arenas & Showrooms  
Workshops & Gymnasiums  
Loading Docks & Warehouses  
Aircraft Hangers  
Swimming Pools & Ski Resorts  
Walkways & Entryways  
Sports Arenas & Driving Ranges  
Bus Stops & Smoking Areas



Bronze



Brushed Stainless Steel

- › Electric heat package solutions for integration into total building system
  - Flexible Sizing: 2- or 3-element design provides concentrated heating capacity in a single infrared radiant heater
  - Element Types: Metal Sheath, Quartz Tube and Quartz Lamp
  - Variable Lengths: 24", 33" & 46" to accommodate various installation spaces
  - Heavy-gauge gold anodized reflectors offer a wide selection of beam patterns providing targeted heat
- › Commercial-grade material for outdoor environments
- › Easy Mounting: All units are factory wired and preassembled for out-of-the-box readiness
- › Agency-Approved for safe use and peace of mind

### Optional Trim Kit for Recessed Mount:

- › Complete in-the-ceiling installation—providing hidden, comfortable, cozy infrared heating
- › Matching heater and trim finish complement building aesthetics
- › Heater, trim kit, and accessories included in a single-carton package for ease of installation and less handling
- › Trim Ring Bracket reduces handling, installation time, and labor



Quartz Tube  
Quartz Lamp



Metal Sheath

# FRP/FRS SERIES

## Commercial/Industrial Infrared Heater

### Optional Accessories:

CATALOG NO.	UPC	DESCRIPTION	COMPATIBLE WITH	CARTONS	SHIP WT.
FWG22	685360084060	Wire Guard for 2-Element Heaters	FRS2/FRP2 (24 in. L)	1	1 lbs
FWG23	685360084077	Wire Guard for 2-Element Heaters	FRS2/FRP2 (33 in. L)	1	1.5 lbs
FWG24	685360084084	Wire Guard for 2-Element Heaters	FRS2/FRP2 (46 in. L)	1	2 lbs
FWG32	685360084091	Wire Guard for 3-Element Heaters	FRS3/FRP3 (24 in. L)	1	1.5 lbs
FWG33	685360084107	Wire Guard for 3-Element Heaters	FRS3/FRP3 (33 in. L)	1	2 lbs
FWG34	685360084114	Wire Guard for 3-Element Heaters	FRS3/FRP3 (46 in. L)	1	2.5 lbs
FRPATMB	685360084022	Adjustable Tilt Mounting Bracket – FRP Series		1 Set	1 lbs
FRSATMB	685360084046	Adjustable Tilt Mounting Bracket – FRS Series		1 Set	1 lbs
FRPWMB	685360084039	Wall Mounting Bracket – FRP Series		1 Set	6 lbs
FRSWMB	685360084053	Wall Mounting Bracket – FRS Series		1 Set	6 lbs
RVS2	685360137650	24 in. Red Vycor sleeve	FR(*)22/FR(*)32	1	–
RVS3	685360137667	33 in. Red Vycor sleeve	FR(*)23/FR(*)33	1	–
RVS4	685360137674	46 in. Red Vycor sleeve	FR(*)24/FR(*)34	1	–
<b>NEW OFFERING!</b>					
IRK-RT(**)2(***)		Recessed Trim Kit	FRS2/FRP2		
IRK-RT(**)3(***)		Recessed Trim Kit	FRS3/FRP3		
IRR-INST-BRK-KT		Installation Trim Ring Bracket	Compatible with all trim kits		

(1) One element per carton order. IRR-INST-BRK-KT included for Recessed Mounted Units. \* Denotes remaining catalog number (See Enclosure Chart).

\*\*Replace with color code: **S** = Stainless, **W** = White, **B** = Bronze, **U** = Custom. \*\*\*Replace with number of bulbs: **2** = 2-bulb, **3** = 3-bulb; then length code: **2** = 24", **3** = 33", **4** = 46"

Metal Sheath: used indoors or outdoors in high-traffic areas; Quartz Tube and Quartz Lamp: used indoors and outdoors for snow melting and spot heating. Bronze finish is not intended for direct salt spray exposure in marine applications or highly corrosive greenhouse, swimming pool, chemical storage or industrial atmospheres. Maintain at least 5 ft. in radiant path, between bottom of heater and combustible material. Pigtail element leads for a more positive connection in high-traffic areas where physical abuse.

### Maximum Wattage:

	2-ELEMENT ENCLOSURE			3-ELEMENT ENCLOSURE		
	METAL SHEATH	QUARTZ TUBE	QUARTZ LAMP	METAL SHEATH	QUARTZ TUBE	QUARTZ LAMP
24"	1,700	2,000	3,200	2,500	3,000	4,800
33"	3,000	3,000	5,000	4,500	4,500	7,500
46"	4,000	4,000	7,300	6,000	6,000	10,950

### Element Wattage\*

Metal Sheath	850	1500	2000
Quartz Tube	1000	1500	2000
Quartz Lamp	1600	2500	3650

\*Specs vary by size. Refer to the submittal sheet for full details.

### Element Voltages\*

208	240
277	347
480	600

### Enclosure: Dimensions\*

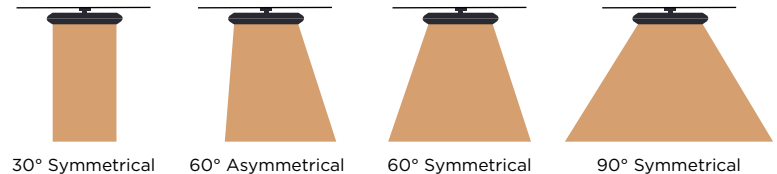
	Height	Width	Length		
2 Bulb	7 1/8"	15"	24"	33"	46"
3 Bulb		12 1/2"			

NOTE: All models are NON-STOCK, MADE-TO-ORDER. When ordering, specify quantity, catalog number, voltage, wattage, optional controls, and finish. Consult sales representative for lead times.

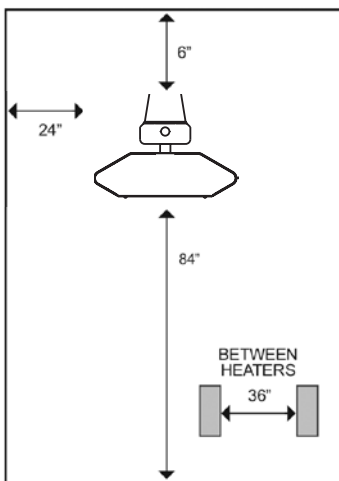
\*Specs vary by size. Refer to the submittal sheet for full details.

### Reflection Angle\*

30° Sym.
60° Sym.   60° Asym.
90° Sym.



### Clearances:



### MOUNTING CLEARANCES

- 24 in. to vertical side walls
- 36 in. between heaters mounted side by side. Heaters may be mounted end to end.
- 6 in. to ceiling
- 84 in. to floor

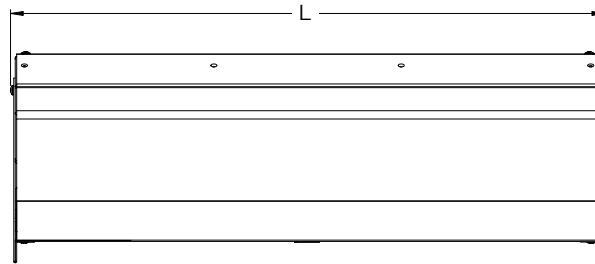
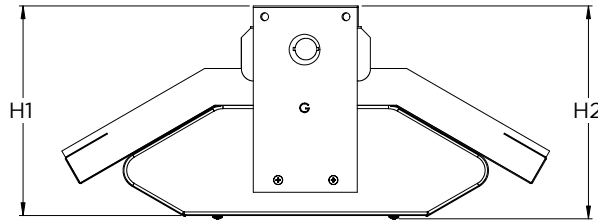
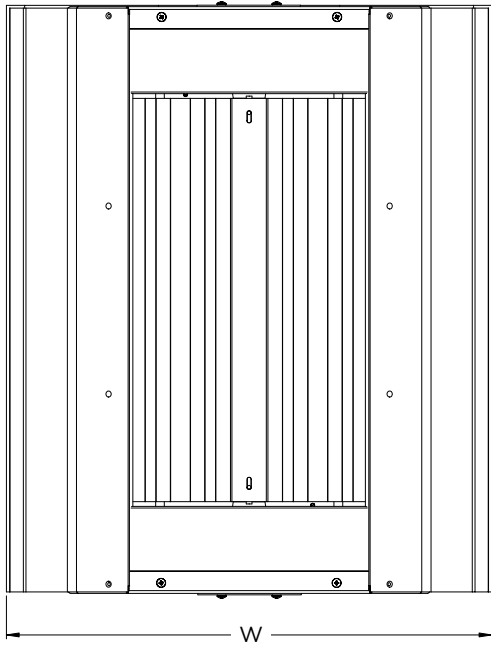
# FRP/FRS SERIES

## Commercial/Industrial Infrared Heater

Scan the QR code  
to access additional  
specs and features

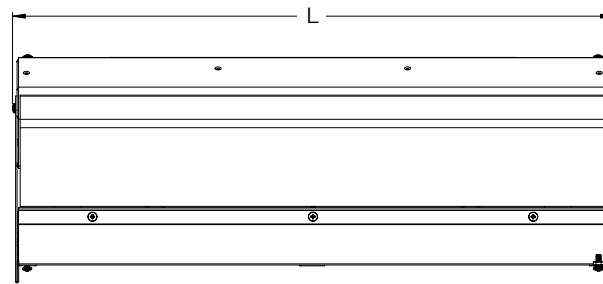
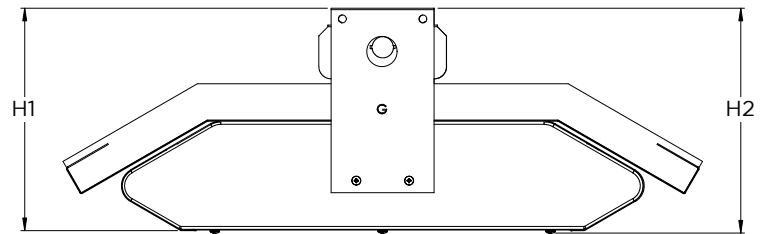
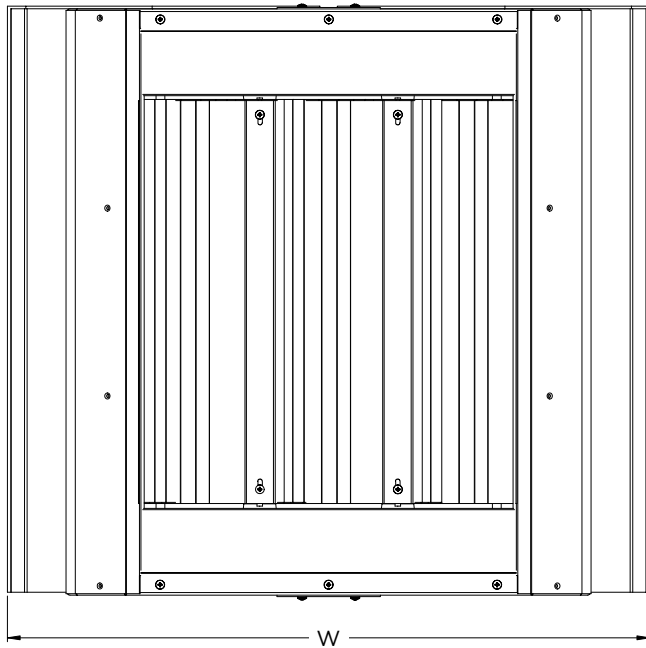


### Dimensions: 2-Element



2-ELEMENT LENGTH			
	24"	33"	46"
<b>L</b>	24 <sup>3</sup> / <sub>8</sub>	33 <sup>3</sup> / <sub>8</sub>	46 <sup>3</sup> / <sub>8</sub>
<b>W</b>	19 <sup>7</sup> / <sub>8</sub>	19 <sup>7</sup> / <sub>8</sub>	19 <sup>7</sup> / <sub>8</sub>
<b>H1</b>	8 <sup>21</sup> / <sub>32</sub>	8 <sup>21</sup> / <sub>32</sub>	8 <sup>21</sup> / <sub>32</sub>
<b>H2</b>	8 <sup>17</sup> / <sub>32</sub>	8 <sup>17</sup> / <sub>32</sub>	8 <sup>17</sup> / <sub>32</sub>

### Dimensions: 3-Element



3-ELEMENT LENGTH			
	24"	33"	46"
<b>L</b>	24 <sup>3</sup> / <sub>8</sub>	33 <sup>3</sup> / <sub>8</sub>	46 <sup>3</sup> / <sub>8</sub>
<b>W</b>	26 <sup>5</sup> / <sub>16</sub>	26 <sup>5</sup> / <sub>16</sub>	26 <sup>5</sup> / <sub>16</sub>
<b>H1</b>	9 <sup>1</sup> / <sub>4</sub>	9 <sup>1</sup> / <sub>4</sub>	9 <sup>1</sup> / <sub>4</sub>
<b>H2</b>	9 <sup>5</sup> / <sub>32</sub>	9 <sup>5</sup> / <sub>32</sub>	9 <sup>5</sup> / <sub>32</sub>