

HRK SERIES

SINGLE ELEMENT INFRARED HEATER



IDEAL SPACES

- Car Washes
- Parking Garages
- Showrooms
- Work Stations
- Loading Docks
- Warehouses

ENCLOSURE TYPE

- Statuary Bronze

ELEMENT TYPE

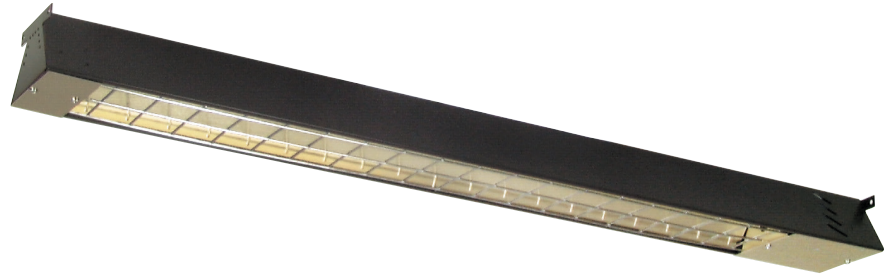
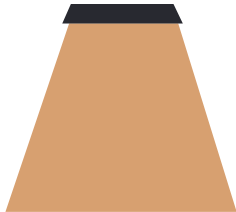
- Quartz

DIMENSIONS

- 3-3/8"H x 5-1/2"W x 46" or 57"

REFLECTIVE ANGLE

- 60° Symmetrical



- Ideal for supplemental and spot heating
- Soft, efficient comfort: heat people and objects not the air for optimal energy efficiency
- Energy savings: provides a low cost energy efficient alternative to propane/gas heat
- Uniform, localized heating: provides instant, fully directional space heating
- Clean, safe comfort: no moving air/parts, no dust, no combustion, no fumes
- Low maintenance with no moving parts or filters, minimal servicing needed
- Heavy-duty gold anodized reflector has one of the highest levels for radiating heat energy
- Optional HWG wire guard provides a protective safety screen preventing objects contacting hot element
- Horizontal ceiling mount with supplied chains or to wall using the optional FRPWMB wall mounting bracket
- High quality finish and steel internal sheet metal parts give excellent service under most operating conditions, including coastal salt air and most industrial atmospheres**

HRK SERIES SINGLE ELEMENT INFRARED HEATER

MODELS & SPECIFICATIONS

CATALOG NO.	UPC	VOLTS	WATTS	REFLECTIVE ANGLE	HEIGHT (IN.)	WIDTH (IN.)	LENGTH (IN.)	SHIP WT. (LBS)
HRK41512	6 85360 08280 6	120	1500	60 Sym	3.375	5.5	46	9
HRK42020	6 85360 08281 3	208	2000	60 Sym	3.375	5.5	46	9
HRK42024	6 85360 08282 0	240	2000	60 Sym	3.375	5.5	46	9
HRK42027	6 85360 08283 7	277	2000	60 Sym	3.375	5.5	46	9
HRK42034	6 85360 08284 4	347	2000	60 Sym	3.375	5.5	46	9
HRK42048	6 85360 08286 8	480	2000	60 Sym	3.375	5.5	46	9
HRK42060	6 85360 08287 5	600	2000	60 Sym	3.375	5.5	46	9
HRK53020	6 85360 08288 2	208	3000	60 Sym	3.375	5.5	57	11
HRK53024	6 85360 08289 9	240	3000	60 Sym	3.375	5.5	57	11
HRK53027	6 85360 08290 5	277	3000	60 Sym	3.375	5.5	57	11
HRK53034	6 85360 08291 2	347	3000	60 Sym	3.375	5.5	57	11
HRK53048	6 85360 08293 6	480	3000	60 Sym	3.375	5.5	57	11
HRK53060	6 85360 08294 3	600	3000	60 Sym	3.375	5.5	57	11

NOTE: *Quartz Lamp: used indoors and outdoors for snow melting and spot heating. **Finish not intended for direct salt spray exposure in marine applications or highly corrosive greenhouse, swimming pool, chemical storage or industrial atmospheres. Maintain at least 5 ft. in radiant path, between bottom of heater and combustible material. Pigtail element leads for a more positive connection in high-traffic areas where physical abuse.

ACCESSORIES

CATALOG NO.	UPC	DESCRIPTION	COMPATIBLE WITH	CARTONS	SHIP WT. (LBS)
HWG46	6 85360 13837 4	Wire Guard	HRK4	1	1
HWG57	6 85360 13838 1	Wire Guard	HRK5	1	1.5

