

Fahrenheit FFH Small Wall Heater

- The following pictorial is a step by step installation guide. It will show the installation in a new construction situation, but the basic steps are the same for existing construction. Read the owners manual for the installation that matches your specific needs.

FFH1614
Small Fan-Forced Wall Heater

Fahrenheit®
The Choice of Professionals

With "Clip 'n' Fit"®
Wattage Selector

- Easy Recessed Installation Fits In Standard Stud Wall
- Built-in Double Pole Thermostat
- Patented "Clip 'n' Fit"® Feature- Allows for Permanent Conversion to Lower Wattage
- Dual Protection Automatic Safety Limit With Backup Thermal Fuse
- Durable Steel Front Cover With Rounded Corners
- White Baked Enamel Finish
- 5 Year Limited Element Warranty

240 Volts

2000 Watts / 8.3 Amps
1500 Watts / 6.3 Amps
1000 Watts / 4.2 Amps
500 Watts / 2.1 Amps

UL US

Example

WARNING

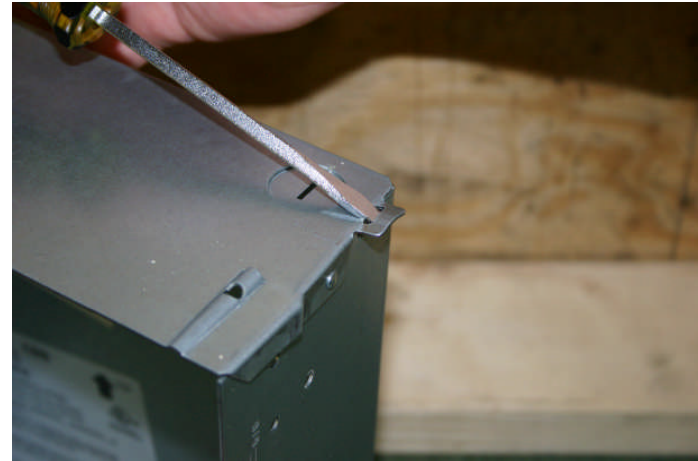
- **Before installing this electric heater read and understand the instruction manual.**
- The following minimum clearances must be maintained:
 - Heater to floor – 4.5 in. (114mm)
 - Heater to adjacent wall – 4.5 in. (114mm)
 - Heater to ceiling – 12 in. (305mm)

Installation Instructions

- Verify the Nameplate rated VOLTAGE & AMPERAGE prior to installation.
- Size the wire and breaker for the amp load of the heater.

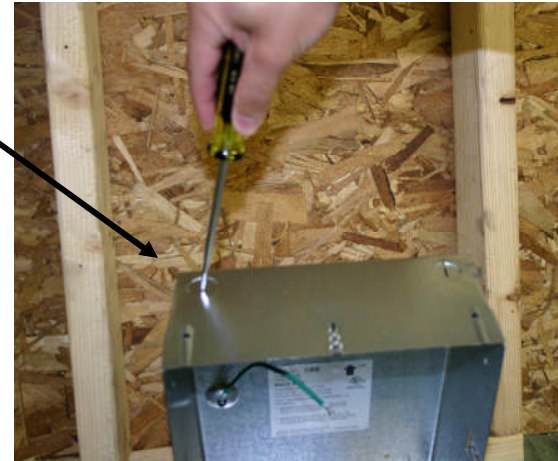
Step 1

- **Note: For new construction installation the edge of the back box must be installed flush with the finished surface.**
1. **Determine which side of the back box is to be mounted against the stud.**
 2. **Bend the tabs at the rear corners out 90 degrees. This will square the back box with the wall stud.**



Step 2

- Remove the knockout (KO) in the upper left of the back box



- Install a cable clamp in the knockout (not provided)



Step 4

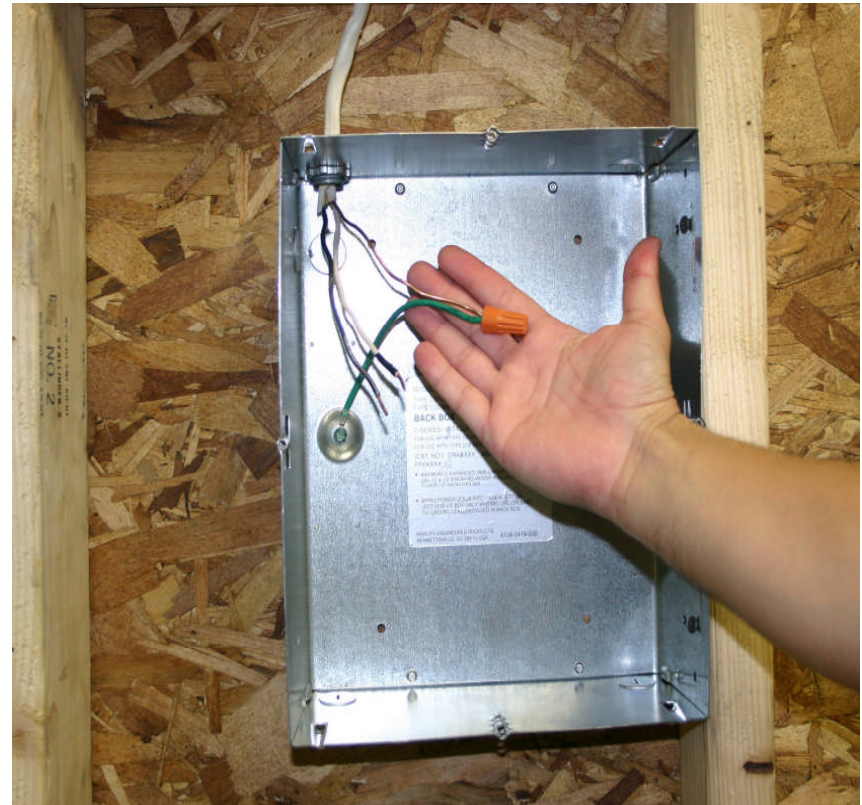
- Insert power cable through the cable clamp and allow at least 6" of wire to enter the back box.
- Tighten the cable clamp so the wire is snug and held in place. (Do not over tighten)



Note: If you are using a two wire with a ground for a 240 volt heater, place a piece of black electrical tape at the end of the white wire to show it is a hot lead and not a neutral wire.

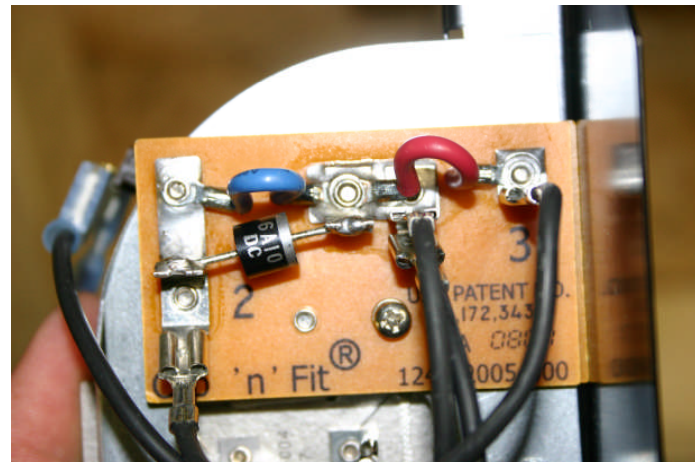
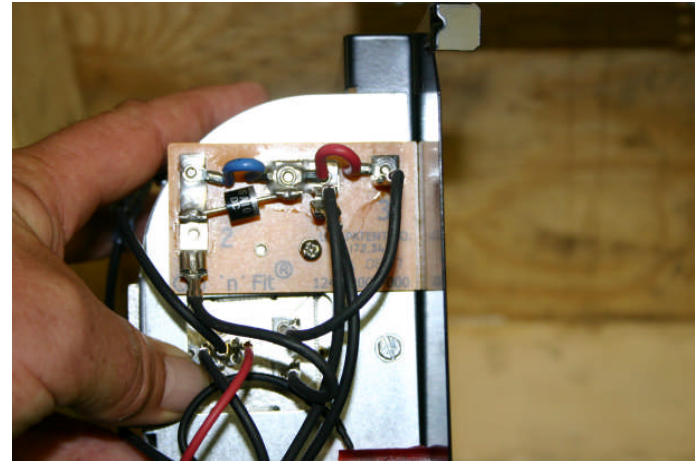
Step 5

- Connect the green ground wire from the back box to the ground wire of the power cable with a wire nut.



Step 6

- This heater is equipped with a Clip-N-Fit board. You can permanently change the wattage output of the heater as desired. Read the instruction manual to determine available wattages and how to adjust.
- The adjustment is made by clipping one or both of the wires (red and or blue).



Step 7

- Locate the two pigtail wires from the thermostat. These wires will be used to connect the power supply to the heater

Note: In new construction, do not install the heater into back box until the finished wall is complete.



Looking at the back of the fan panel assembly.

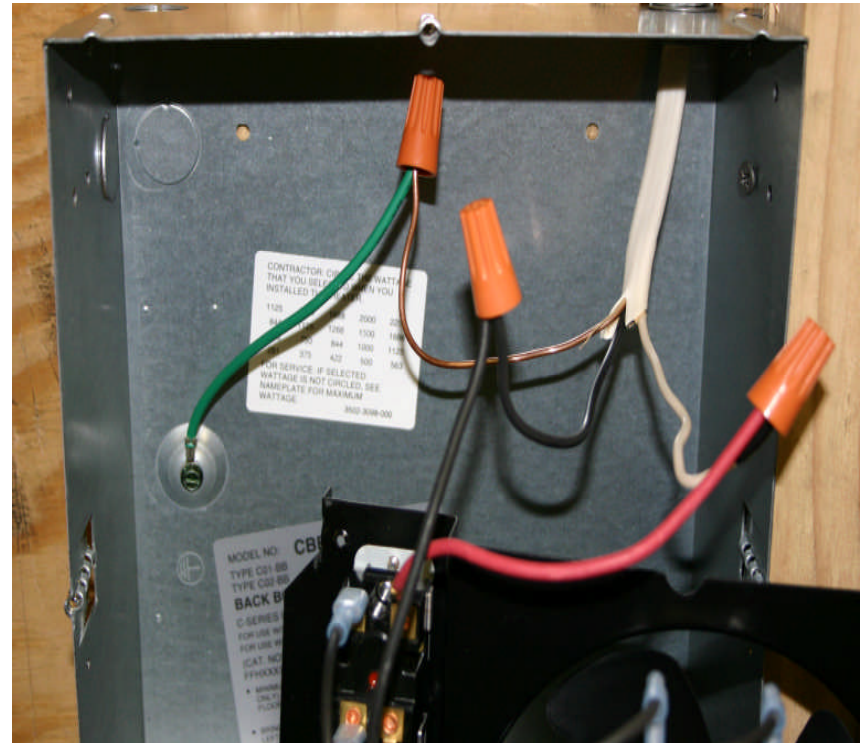
Step 8

- Connect the RED wire from the thermostat to the WHITE wire (w/black marker) from the power cable, using wire nut included.



Step 9

- Connect the BLACK wire from the thermostat to the BLACK wire from the power cable, using wire nut include.



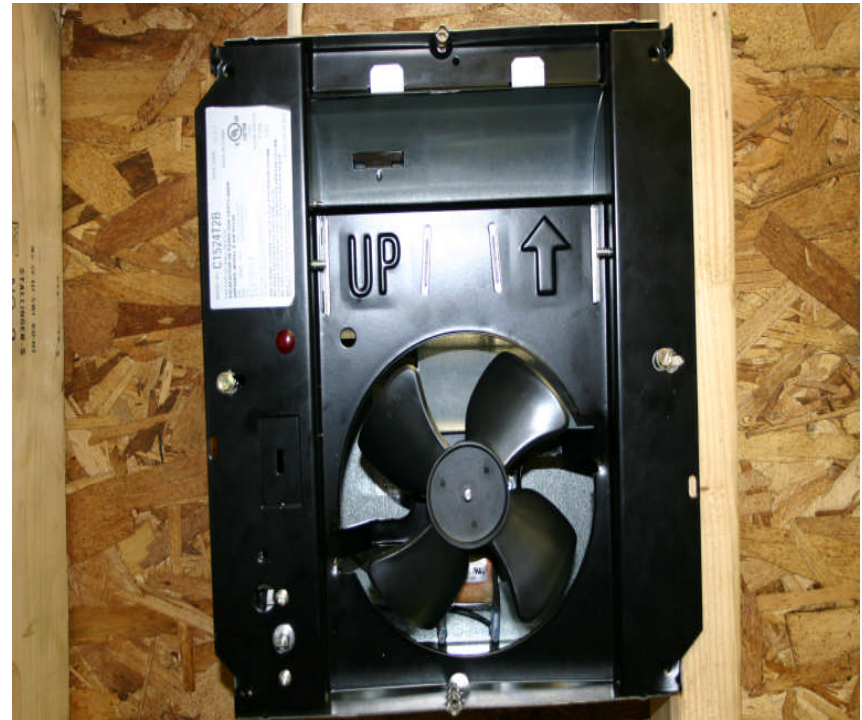
Step 10

- Once you have the wire connections made and checked, tuck the wires neatly into the top of the back box and insert the inner frame.
- Using the screws provided tighten the inner frame to the back box.



Step 11

- Verify the unit has been installed with the arrow pointing up.
- The fan blade will be at the bottom when installed correctly.



Step 12

- Install the grille with the painted screws provided
- Install the knob onto the shaft of the thermostat.



Test Procedure/Operational Guide

- Adjust the thermostat to the full counterclockwise position (off).
- Turn on the power at the main disconnect.
- The heater should be off, nothing operating.
- Turn the thermostat to the full clockwise position.
- The fan and the elements will come on and blow hot air.

» continued

Test Procedure/Operation Guide

- To adjust the thermostat, turn the knob to the full on position and let the unit run until the room reaches a comfortable temperature.
- Turn the thermostat counterclockwise slowly until you hear (or feel) a click. Stop adjusting the thermostat at that point.
- The unit will now cycle on and off as needed to maintain that temperature in the room.