

# Fahrenheit FZL Large Wall Heater

- The following pictorial is a step by step installation guide. It will show the installation in a new construction situation, but the basic steps are the same for existing construction. Read the owners manual for the installation that matches your specific needs

**FZL4004**  
**Large, Heavy-Duty Fan-Forced Wall Heater**

**Fahrenheit**  
The Choice of Professionals

- Installs Quickly with 3-Piece Construction
- Heating Power Up To 4000 Watts For High Heat Loss Locations
- Safe, Quiet Operation
- Automatic High-Temperature Safety Limit / Manual Reset
- 5 Year Limited Element Warranty

**240 Volts**  
**4000 Watts / 16.7 Amps**

**Example**

# **WARNING**

- **Before installing this electric heater read and understand the instruction manual.**
- For Wall Mounting Only
- The following minimum clearances must be maintained:
  - Heater to floor – 8 in. (203mm)
  - Heater to adjacent wall – 8 in. (203mm)
  - Heater to ceiling – 36 in. (915mm)

# Installation Instructions

- Verify the Nameplate rated VOLTAGE & AMPERAGE prior to installation.
- Size the wire and breaker for the amp load of the heater
- If not familiar with electrical circuits, contact a licensed electrician.

# Step 1

Note: For new construction installation, the edge of the back box must be installed flush with the finished wall surface.

- Secure the back box to the wall studs using wood screws or nails as shown.



## Step 2

- Remove the knockout (KO) in the top of the back box and install a cable clamp.



# Step 3

- Insert power supply cable through the cable clamp (not provided), allow at least 6" of leads to extend into the box.
- All wiring must be in accordance with National and local Electrical Codes.  
\*Refer to table below for correct wire size.

MODEL #	WATTS	VOLTS	AMPS	WIRE SIZE
FZL3004B	3000	240	12.5	12 AWG
FZL4004B	4000	240	16.7	10 AWG



# Step 4

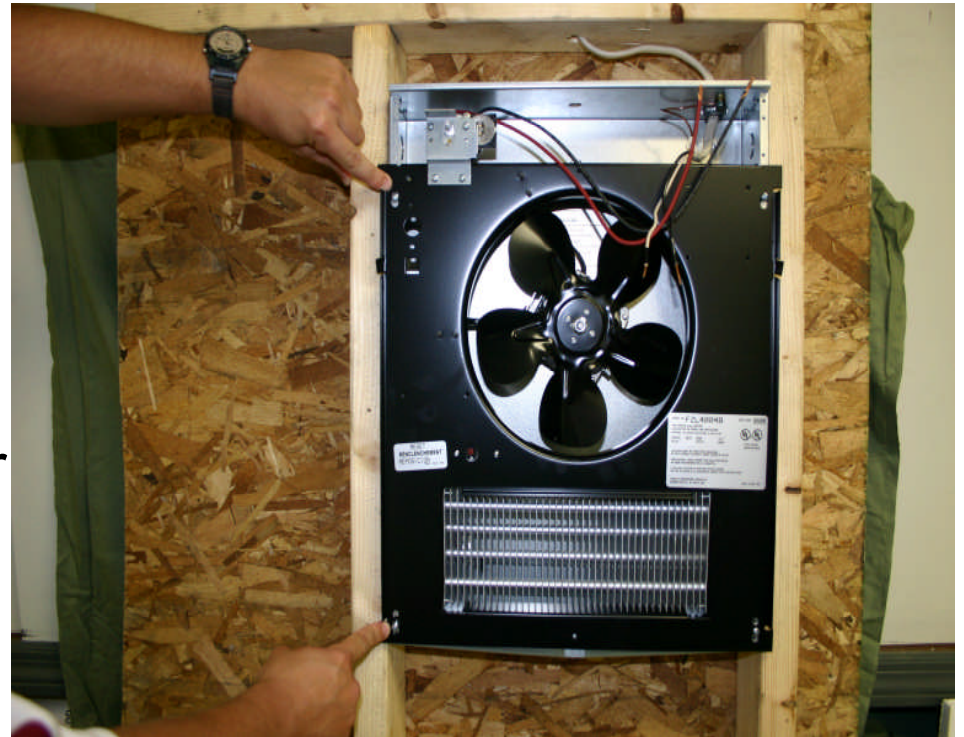
- **Ground the back box by connecting the supply ground wire to the green ground screw located in the inside top of the back box.**

**Note: If you are using a two conductor with a ground (one black and one white wire) place a piece of black electrical tape around the end of the insulation of the white wire. This will show that this wire is hot and not a neutral.**



# Step 5

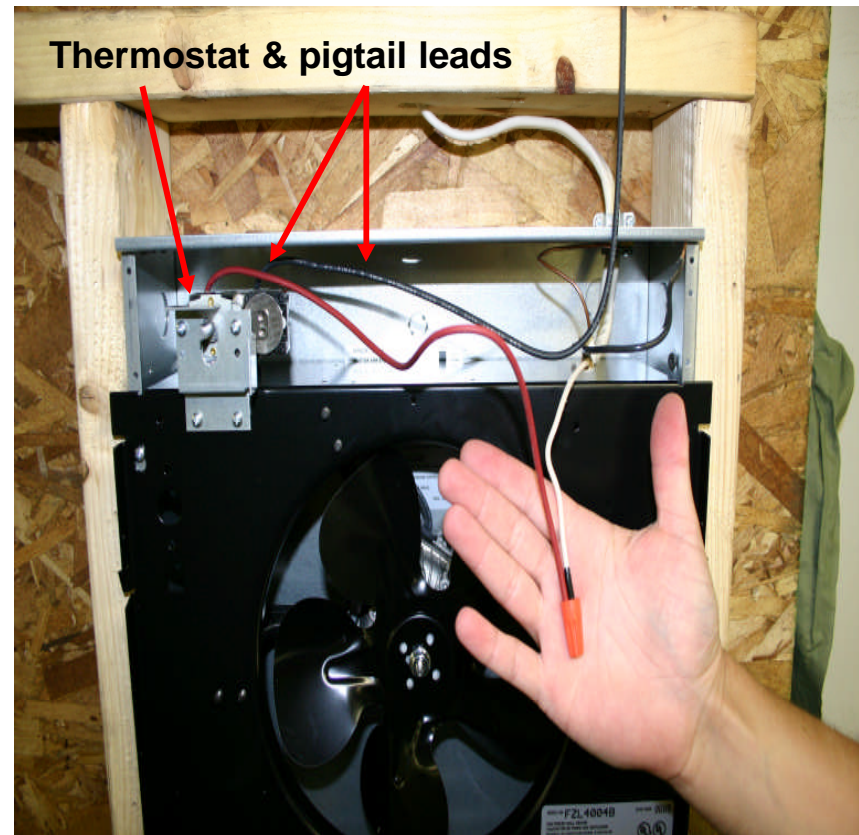
- Locate the 4 screws on the front of the back box and loosen as necessary.
- The heater assembly will slide over these 4 screws into key hole slots.
- Tighten 4 screws to securely fasten the heater assembly to the back box.
- Note: Do not install the heater into back box until the finished wall is complete.





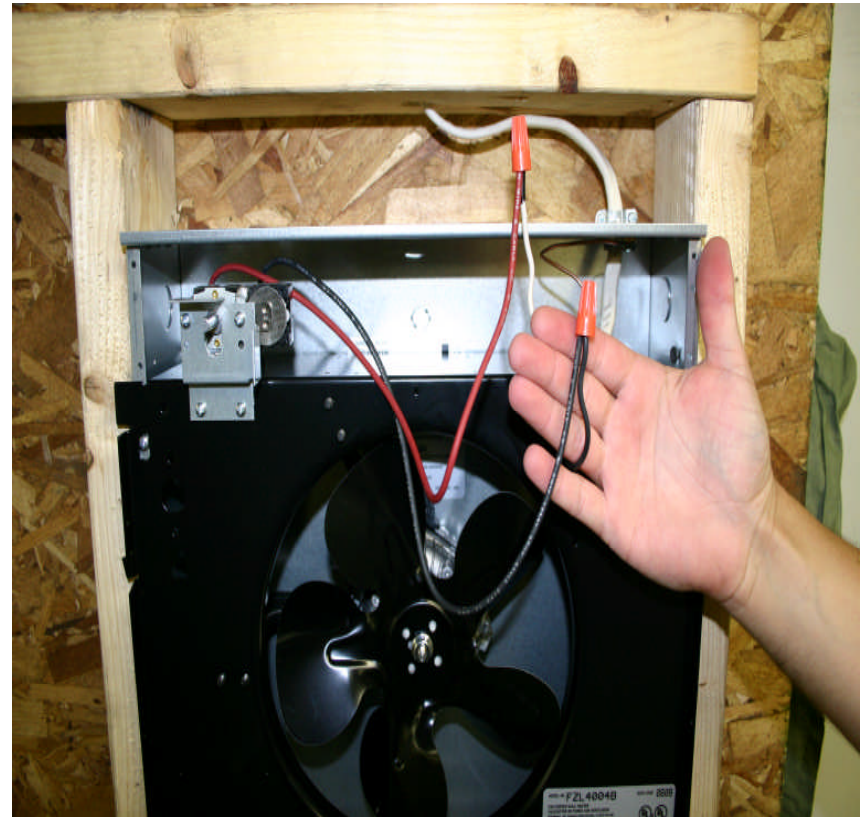
# Step 6

- Locate the two pigtail leads from the thermostat in the upper left hand corner. There will be one black wire and one red wire stripped on one end.
- Attach the red wire from the thermostat to the white supply wire (with the black tape) with wire nut provided.



# Step 7

- Attach the black wire from the thermostat to the black supply wire with the wire nut provided.



# Step 8

- Once all connections have been made and checked, push the wires back into the back box as shown.



# Step 9

- Install the grille with the 4 painted screws provided.
- Attach the thermostat knob to the shaft of the thermostat by aligning the flat part of the shaft with the corresponding flat of the knob and push gently into place.



# Operation Check

- Turn the thermostat knob to the full counterclockwise position. (off).
- Turn the power on at the main disconnect.
- Let the unit sit for 5 minutes to make sure nothing is operating.
- Turn the knob to the full clockwise position.
- In a matter of a few seconds you will feel heat coming from the unit. The fan will delay on approximately 45 seconds.
- Once the unit has been energized approximately 45 seconds the fan will start and blow heat into the room. (Note: you may notice a slight amount of smoke from the unit at this point. It is normal and comes from a light coating of oil on the elements.)
- Allow the unit to run for a few minutes and then turn the thermostat down, slowly (counterclockwise) until you hear a click. Stop turning the knob at this point and allow the unit to operate.
- The heater should run a minute or two and then shut off.
- If all the above worked properly you have completed the installation of the heater.

# Heater Operation

- The built in thermostat in this heater is known as a comfort thermostat. It has a range of 45 – 85 degrees F.
- To set the thermostat, turn the knob to its full clockwise position (on) and allow the unit to operate until the room reaches a comfortable temperature.
- Turn the knob counterclockwise, slowly until you hear (or feel) a click.
- Stop at that position and allow the unit to run. It will cycle on and off as needed to maintain that temperature in the room.