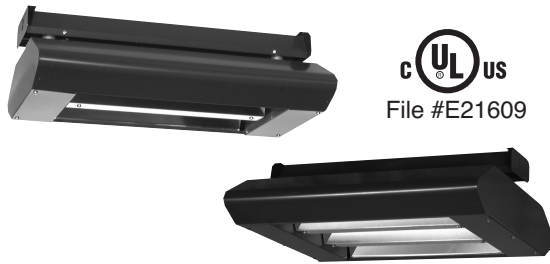




2 AND 3 ELEMENT INFRARED HEATERS

Total or supplement (spot) heating in commercial and industrial areas, assembly lines, aircraft hangers, outside smoking areas, work stations and shipping areas. Snow melting for waiting areas and entryways, stairs, parking lots, driveways and loading docks, smoking areas. Available with Stainless Steel or Painted Steel enclosure. Double element and three element heaters provide concentrated heating capacity in a single infrared radiant heater.



- Two or three element design
- Painted or stainless steel enclosure
- Heavy gauge gold anodized aluminum reflectors offer a wide section of beam patterns.
- **Easy Installation** - Attach upper mounting support to ceiling or optional wall bracket, rough in wiring and hang heater into place.

Type PRP – 20 gauge galvanized steel enclosure and heater support / wiring compartment painted in a Statuary Bronze powder coat finish.

Type PRS – Type 304, brush finished, 20 gauge, stainless steel enclosure and heater support / wiring compartment for applications requiring additional corrosion resistance.

ELEMENTS

- **Metal Sheath, Quartz Tube or Quartz Lamp elements** – used interchangeably provides the flexibility necessary for multiple application projects.
- **Metal sheathed elements** – used indoors, or outdoors protected from the wind, in areas where physical abuse is a problem.
- **Quartz Tube and Quartz Lamp** – used indoors and outdoors in areas where abuse is not a problem for snow melting and spot heating.
- Pigtail element leads for a more positive connection on applications where physical abuse is a problem.

Ordering Summary – 2 Element Enclosure

ORDER NUMBER		REFLECTOR ANGLE	DIMENSIONS			MAXIMUM WATTAGE			WT. lbs.(kg)
STAINLESS STEEL ENCLOSURE	PAINTED STEEL ENCLOSURE		HEIGHT in.(mm)	WIDTH in.(mm)	LENGTH in.(mm)	METAL SHEATH	QUARTZ TUBE	QUARTZ LAMP	
PRS223S	PRP223S	30 Sym							
PRS226S	PRP226S	60 Sym			24(610)	1700	2000	3200	19(8.6)
PRS226AS	PRP226AS	60 Asym							
PRS229S	PRP229S	90 Sym							
PRS233S	PRP233S	30 Sym							
PRS236S	PRP236S	60 Sym	7(181)	15(381)	33(838)	3000	3000	5000	24(10.9)
PRS236AS	PRP236AS	60 Asym							
PRS239S	PRP239S	90 Sym							
PRS243S	PRP243S	30 Sym							
PRS246S	PRP246S	60 Sym			46(1168)	4000	4000	7300	31(14.1)
PRS246AS	PRP246AS	60 Asym							
PRS249S	PRP249S	90 Sym							

(Enclosure only - Select appropriate element from element selection chart)

Ordering Summary – 3 Element Enclosure

ORDER NUMBER		REFLECTOR ANGLE	DIMENSIONS			MAXIMUM WATTAGE			WT. lbs.(kg)
STAINLESS STEEL ENCLOSURE	PAINTED STEEL ENCLOSURE		HEIGHT in.(mm)	WIDTH in.(mm)	LENGTH in.(mm)	METAL SHEATH	QUARTZ TUBE	QUARTZ LAMP	
PRS323S	PRP323S	30 Sym							
PRS326S	PRP326S	60 Sym			24(610)	2550	3000	4800	19(8.6)
PRS326AS	PRP326AS	60 Asym							
PRS329S	PRP329S	90 Sym							
PRS333S	PRP333S	30 Sym							
FR3236S	PRP336S	60 Sym	7(181)	21.5(546)	33(838)	4500	4500	7500	24(10.9)
PRS336AS	PRP336AS	60 Asym							
PRS339S	PRP339S	90 Sym							
PRS343S	PRP343S	30 Sym							
PRS346S	PRP346S	60 Sym			46(1168)	6000	6000	10950	31(14.1)
PRS346AS	PRP346AS	60 Asym							
PRS349S	PRP349S	90 Sym							

(Enclosure only - Select appropriate element from element selection chart)

2 AND 3 ELEMENT INFRARED HEATERS (CONT.)

Ordering Summary Element Selection

1 Element per carton

*** ORDER NO.	AVAILABLE VOLTS	ELEMENT		USED WITH FIXTURE	WT. lbs. (gr)
		WATTS	TYPE		
P2MS08***	208, 240, 277 347, 380, 480, 600	850	Metal Sheath	24" PRP*2	1(454)
P2QT10***	208, 240, 277,	1000	Quartz Tube	or	1 (454)
P2QL16***	208, 240, 277, 347, 380, 480, 600	1600	Quartz Lamp	PRS*2	1 (454)
P3MS15***	208, 240, 277, 347, 380, 480, 600	1500	Metal Sheath	33" PRP*3	1 (454)
P3QT15***	208, 240, 277,	1500	Quartz Tube	or	1 (454)
P3QL25***	208, 240, 277, 347, 380, 480, 600	2500	Quartz Lamp	PRS*3	1 (454)
P4MS20***	208, 240, 277, 347, 380, 480, 600	2000	Metal Sheath	46" PRP*4	1 (454)
P4QT20***	208, 240, 277, 347, 380, 480, 600	2000	Quartz Tube	or	1 (454)
P4QL36***	347, 380 480, 600	3650	Quartz Lamp	PRS*4	1 (454)

* 2 for 2 element enclosure

* 3 for 3 element enclosure

Optional Mechanical Accessories

ORDER NUMBER	DESCRIPTION	CARTON QTY	USED WITH FIXTURE	WT. lbs. (gr)
PWG22			PRS22 / PRP22	1 (454)
PWG23	Wire Guard		PRS23 / PRP23	1.5 (680)
PWG24	Protective safety screen helps	1	PRS24 / PRP24	2 (907)
PWG32	prevent objects coming in contact		PRS32 / PRP32	1.5 (680)
PWG33	with hot element.		PRS33 / PRP33	2 (907)
PWG34			PRS34 / PRP34	2.5(1134)
	Adjust Tilt Mounting Bracket			
PRPATMB	Replaces upper support bracket, allows fixture to be tilted for	1 Set	PRP Series	1 (454)
PRSATMB	precise pattern location in spot heating and perimeter applications.		PRS Series	
PRVS2	Red Vycor Sleeve		PRS*2 / PRP*2	
PRVS3	Reduces the light intensity of	1	PRS*3 / PRP*3	1 (454)
PRVS4	Quartz Lamps.		PRS*4 / PRP*4	

* 2 for 2 element enclosure

* 3 for 3 element enclosure

APPLICATION LIMITATIONS and PRECAUTIONS:

- Hazardous Atmosphere – These heaters are not suitable for use in hazardous locations.

- Mounting Clearances – Maintain minimum clearances of:

- 24" (610 mm) to vertical side walls
- 36" (914 mm) between heaters mounted side by side. Heaters may be mounted end to end.
- 6" (152 mm) to ceiling
- 84" (2134 mm) to floor.

Maintain at least 5 ft. (1.5 m), in radiant path, between bottom of heater and combustible material.

- Corrosive Atmospheres – The high quality finish and aluminized steel of the PRP series will give excellent service under normal to severe operating conditions, including coastal salt air and most industrial atmospheres. However for severe conditions such as swimming pool, green houses, etc., the PRS stainless steel enclosure should be used.

Optional Mechanical Accessories

ORDER NUMBER	DESCRIPTION	CARTON QTY	USED WITH FIXTURE	WT. lbs. (gr)
PRPWMB	Wall Mounting Bracket		PRP Series	
	Allows heater mounting along	1 Set		2 (907)
PRSWMB	wall at optimum application height.		PRS Series	